

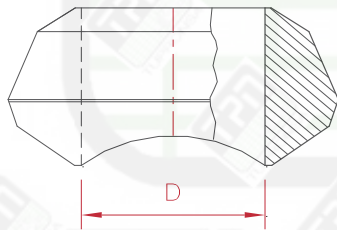
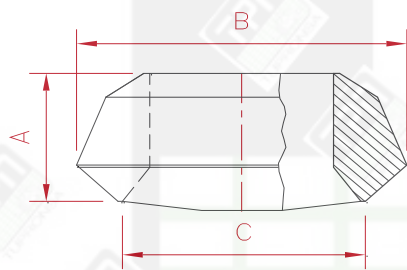


CONEXIONES "OLET" 3000# & 6000#

**SWAGES CONCENTRICOS Y EXCENTRICOS
CEDULAS STD/40, 80/XS, 160 & XXS**

Weldolet

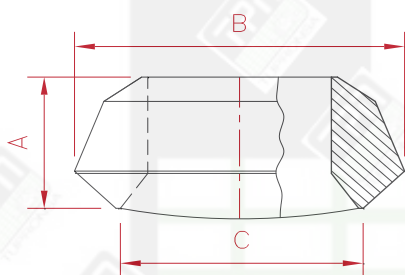
Cedula STD



DIAM. NOM OD	DIMENSIONES				PESO APROX EN KG.
	A	B	C	D	
MM	MM	MM	MM	MM	
21.3	19.1	34.9	23.8	15.9	0.07
26.7	22.2	41.3	30.2	20.6	0.11
33.4	27.0	50.8	36.5	26.2	0.18
42.2	31.8	60.3	44.5	34.9	0.32
48.3	33.3	73.0	50.8	41.3	0.36
60.3	38.1	88.9	65.1	52.4	0.68
73.0	41.3	103.2	76.2	61.9	1.02
88.9	44.5	122.2	93.7	77.8	1.70
101.6	50.8	136.5	98.4	90.5	2.27
114.3	50.8	152.4	120.7	101.6	3.04
141.3	57.2	181.0	141.3	128.6	3.86
168.3	60.3	215.9	169.9	154.0	6.35
219.1	69.9	263.5	220.7	201.6	12.70
273.0	77.8	319.1	274.6	254.0	17.69
323.9	85.7	377.8	325.4	304.8	29.48

Weldolet

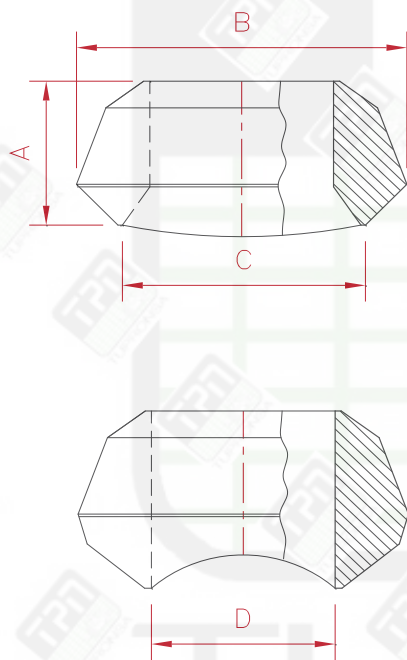
Red. Cedula STD



DIAM. NOM OD	DIMENSIONES			PESO APROX EN KG.
	A	B	C	
MM	MM	MM	MM	
10.3	15.9	25.4	15.9	0.05
13.7	15.9	25.4	15.9	0.05
17.1	19.1	31.8	19.1	0.07
21.3	19.1	34.9	23.8	0.09
26.7	22.2	44.5	30.2	0.11
33.4	27.0	54.0	36.5	0.23
42.2	31.8	65.1	44.5	0.36
48.3	33.3	73.0	50.8	0.45
60.3	38.1	88.9	65.1	0.79
73.0	41.3	103.2	76.2	1.13
88.9	44.5	122.2	93.7	1.86
101.6	47.6	142.9	101.6	2.49
114.3	50.8	152.4	120.7	2.86
141.3	57.2	179.4	141.3	4.65
168.3	60.3	215.9	169.9	5.44
219.1	69.9	263.5	220.7	10.43
273.0	77.8	322.3	274.6	16.33
323.9	85.7	377.8	325.4	26.76

Weldolet

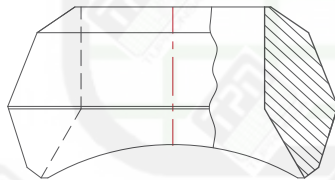
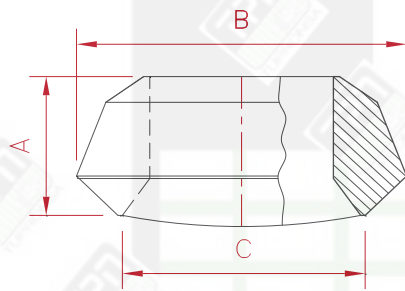
Cedula XS



DIAM. NOM OD	DIMENSIONES				PESO APROX EN KG.
	A	B	C	D	
MM	MM	MM	MM	MM	
21.3	19.05	34.93	23.81	15.88	0.07
26.7	22.23	41.28	30.16	20.64	0.11
33.4	26.99	50.80	36.51	26.19	0.18
42.2	31.75	61.91	44.45	34.93	0.32
48.3	33.34	73.03	50.80	41.28	0.41
60.3	38.10	88.90	65.09	52.39	0.73
73.0	41.28	103.19	76.20	61.91	1.13
88.9	44.45	122.24	93.66	77.79	1.86
101.6	50.80	136.53	98.43	90.49	2.31
114.3	50.80	152.40	120.65	101.60	3.40
141.3	57.15	180.98	141.29	128.59	4.31
168.3	77.79	225.43	169.86	153.99	6.80
219.1	98.43	269.88	220.66	193.68	14.51
273.0	88.90	327.03	265.11	247.65	20.87
323.9	100.01	385.76	330.20	298.45	27.67

Weldolet

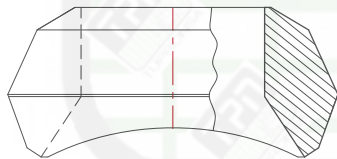
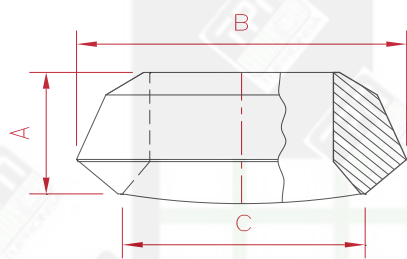
Red. Cedula XS



DIAM. NOM OD	DIMENSIONES			PESO APROX EN KG.
	A	B	C	
MM	MM	MM	MM	
10.3	15.88	25.40	15.88	0.05
13.7	15.9	25.4	15.9	0.05
17.1	19.1	31.8	19.1	0.07
21.3	19.1	34.9	23.8	0.09
26.7	22.2	44.5	30.2	0.14
33.4	27.0	54.0	36.5	0.23
42.2	31.8	65.1	44.5	0.41
48.3	33.3	73.0	50.8	0.50
60.3	38.1	88.9	65.1	0.79
73.0	41.3	103.2	76.2	1.18
88.9	44.5	122.2	93.7	1.86
101.6	47.6	136.5	101.6	2.54
114.3	50.8	152.4	120.7	2.90
141.3	57.2	179.4	141.3	4.72
168.30	77.8	225.4	169.9	10.43
219.1	98.4	292.1	220.7	16.78
273	93.66	323.9	265.1	20.87
323.9	103.19	379.4	317.5	27.67

Weldolet

Red. Cedula 160 & XXS

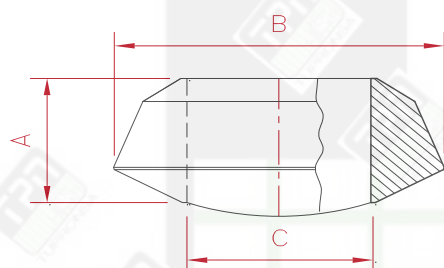


DIAM. NOM OD	DIMENSIONES			PESO APROX EN KG.
	A	B	C	
MM	MM	MM	MM	
21.30	28.58	34.93	14.29	0.11
26.70	31.75	44.45	19.05	0.32
33.4	38.10	50.80	25.40	0.39
42.20	44.45	61.91	33.34	0.57
48.30	50.80	69.85	38.10	0.79
60.30	55.56	80.96	42.86	0.98
73.00	61.91	96.84	53.98	1.54
88.90	73.03	120.65	73.03	2.86
114.30	84.14	152.40	98.43	4.76
141.30	93.66	187.33	122.24	6.46
168.3	104.78	220.66	146.05	12.70

TUBERONS

Weldolet

Ceulas 160 & XXS

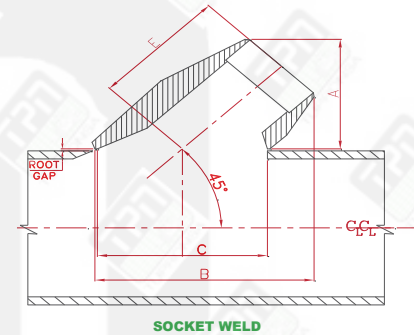
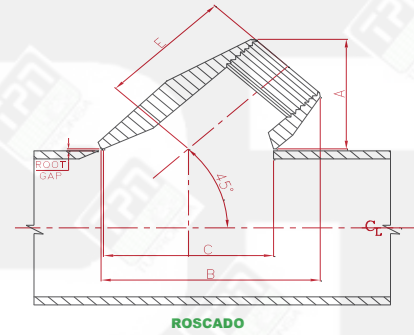
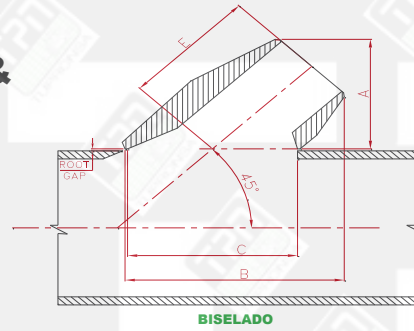


DIAM. NOM OD	DIMENSIONES			PESO APROX EN KG.
	A	B	C	
MM	MM	MM	MM	
21.3	28.6	34.9	14.3	0.11
26.7	31.8	44.5	19.1	0.32
33.4	38.1	50.8	25.4	0.36
42.2	44.5	61.9	33.3	0.57
48.3	50.8	69.9	38.1	0.79
60.3	55.6	81.0	42.9	0.98
73.0	61.9	96.8	54.0	1.54
88.9	73.0	120.7	73.0	2.88
114.3	84.1	152.4	98.4	4.76
141.3	93.7	187.3	122.2	6.46
168.3	104.8	220.7	146.1	13.7

TURBRONS

Latrolet

45° Roscado, Socket Weld & Biselados



DIMENSIONES

MEDIDA NOMINAL		MEDIDA NOMINAL DE SALIDA	3000# ROSCADO & SOCKET-WELD				6000# ROSCADO & SOCKET-WELD				STD & XS BISELADO				CEDULA 160 & XXS BISELADO		
Inch	Inch	MM	A	B	C	E	A	B	C	E	A	B	C	E	A	B	C
2-1/2 12	-1-1/4 -3	13.70	39.69	59.53	36.51	39.69	39.69	59.53	36.51	39.69	33.34	53.18	36.51	39.69	39.69	58.74	36.51
2-1/2 12	-1-1/4 -3	17.10	39.69	59.53	36.51	39.69	39.69	59.53	36.51	39.69	33.34	53.18	36.51	39.69	39.69	58.74	36.51
2-1/2 12	-1-1/4 -3	21.30	39.69	59.53	36.51	39.69					34.93	54.77	36.51	39.69			
1-1/2 5 12	-1-1/4 -2 -6	21.30					47.63	69.85	44.45	48.42					46.04	69.85	44.45
1-1/2 5 12	-1-1/4 -2 -6	26.70	47.63	69.85	44.45	48.42					42.86	64.29	44.45	48.42			
2-1/2 5 12	-2 -3 -6	26.70					55.56	82.55	53.98	55.56					53.98	82.55	53.98
2-1/2 5 12	-2 -3 -6	33.40	55.56	82.55	53.98	55.56	63.50	92.87	66.68	62.71	50.01	76.2	53.98	55.56	63.50	96.84	66.68

Latrolet

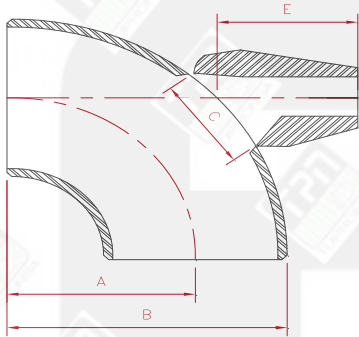
45° Roscado, Socket Weld & Biselados

MEDIDA NOMINAL		MEDIDA NOMINAL DE SALIDA	DIMENSIONES														
			3000# ROSCADO & SOCKET- WELD				6000# ROSCADO & SOCKET- WELD				STD & XS BISELADO				CEDULA 160 & XXS BISELADO		
Inch	Inch	MM	A	B	C	E	A	B	C	E	A	B	C	E	A	B	C
		MM	MM	MM	MM	MM	MM	MM	MM	MM	MM	MM	MM	MM	MM	MM	MM
2-1/2	-2																
5	-3	42.20	63.50	97.63	66.68	74.61	69.85	107.16	76.99	66.68	57.94	91.28	66.68	62.71	69.85	107.95	76.2
12	-6																
2-1/2	-2																
5	-3	48.30	69.85	107.16	76.99	66.68					62.71	100.81	76.99	66.68			
12	-6																
5	-4																
8	-6	48.30					85.73	138.11	104.78	80.17					85.73	136.53	104.78
12	-10																
5	-4																
8	-6	60.30	85.73	138.11	104.78	80.17	85.73	138.11	104.78	80.17	80.96	133.35	104.78	86.52			
12	-10																
5	-4																
8	-6	73.00									80.17	131.76	104.78	78.64			
12	-10																
ORDER TO SPECIFIC RUN PIPE SIZES	-3	88.90									96.84	158.75	126.21	96.04			
	-4	114.30									120.65	198.44	163.51	115.89			

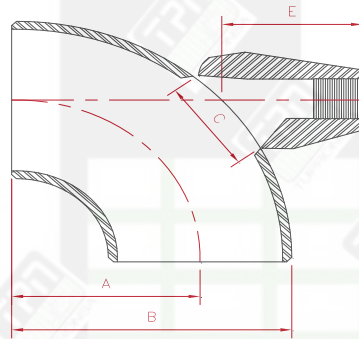
Elbolet

Para Salida de Codos

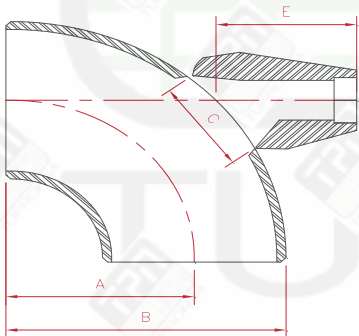
Roscado, Socket Weld & Biselados



SOLDABLE



ROSCADO



SOCKET WELD

DIMENSIONES

**MEDIDA
NOMINAL
DE CODO**

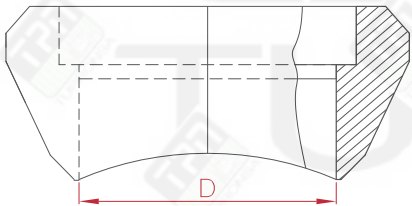
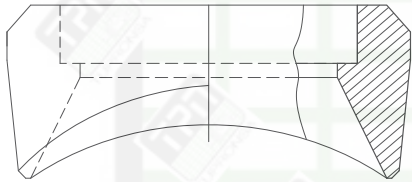
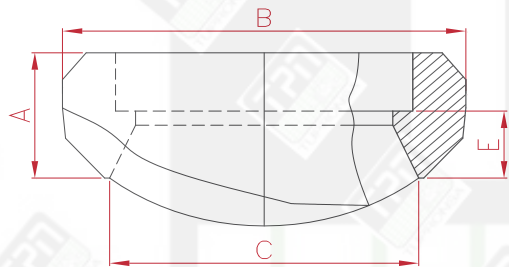
**MEDIDA
NOMINAL
DE
SALIDA**

**3000# ROSCADO &
SOCKET-WELD
CED STD & XS
BISELADO**

**6000# ROSCADO &
SOCKET-WELD
CED 160 & XXS
BISELADO**

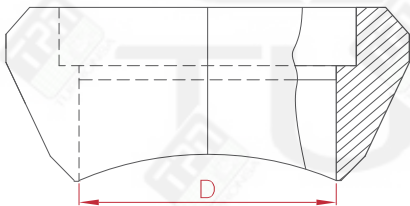
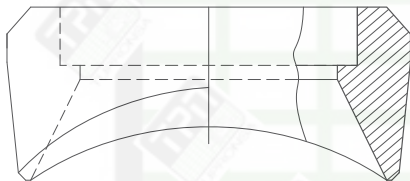
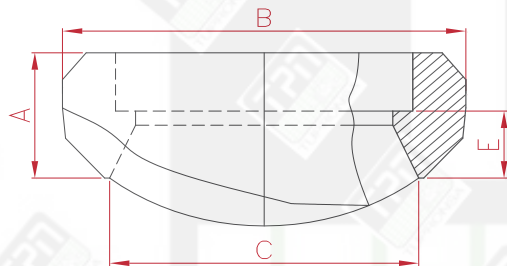
		C	E	C	E
Inches	MM	MM	MM	MM	MM
36 - 3/4	13.7	38.100	40.481	38.100	40.481
36 - 3/4		38.100	40.481	38.100	40.481
36 - 3/4	21.3	38.100	40.481	43.656	47.625
36 - 1	26.7	43.656	47.625	57.150	57.150
36 - 2	33.4	57.150	57.150	73.025	63.500
36 - 2	42.2	73.025	63.500	79.375	68.263
36 - 2	48.3	79.375	68.263	106.363	82.550
36 - 3	60.3	106.363	82.550	-	-
	73.0	106.363	82.550	-	-
	88.9	128.588	98.425	-	-
ORDER TO	114.3	168.275	122.238	-	-
SPECIFIC	168.3	238.125	165.100	-	-
ELBOW SIZES.	219.1	338.138	204.788	-	-
	273	432.594	263.525	-	-
	323.9	498.475	282.575	-	-

Socket 3000# & 6000# Reducido



DIAM. NOM OD	DIMENSIONES					PESO APROX EN KG.	
	A	B	C	D	C		
MM	MM	MM	MM	MM	MM		
	10.3	19.1	25.4	15.9	6.8	7.1	0.05
	13.7	19.1	25.4	15.9	9.2	7.1	0.05
	17.1	20.6	31.8	19.1	12.5	11.1	0.09
	21.3	25.4	35.7	23.0	15.8	14.3	0.14
	26.7	27.0	43.7	29.4	20.9	14.3	0.16
	33.4	33.3	50.8	36.5	26.6	19.8	0.27
	42.2	33.3	65.1	44.5	35.1	19.1	0.39
CL 3000	48.3	34.9	72.2	50.8	40.9	19.1	0.45
	60.3	38.1	88.1	65.1	52.5	20.6	0.73
	73.0	39.7	103.2	76.2	62.7	19.1	1.25
	88.9	44.5	122.2	93.7	77.9	23.8	1.72
	101.6	54.0	132.6	101.6	90.1	25.4	1.95
	114.3	47.6	151.6	120.7	102.3	27.0	3.29
	141.3	66.7	185.7	141.3	128.2	34.1	5.44
	168.3	69.9	219.1	169.9	154.1	35.7	6.58
	21.3	31.8	43.7	19.1	11.8	22.2	0.23
	26.7	36.5	49.6	25.4	15.6	22.2	0.36
CL 6000	33.4	39.7	61.9	33.3	20.7	23.8	0.59
	42.2	41.3	69.1	38.1	29.5	20.6	0.73
	48.3	42.9	82.6	49.2	34.0	22.2	0.91
	60.3	52.4	102.4	69.9	42.9	30.2	2.34

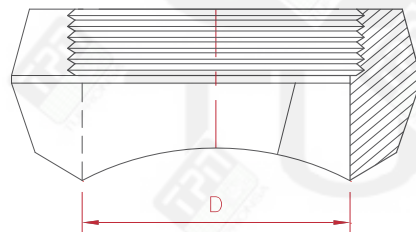
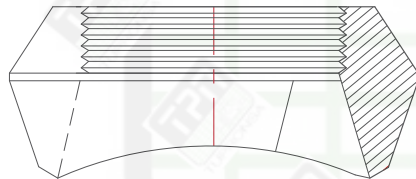
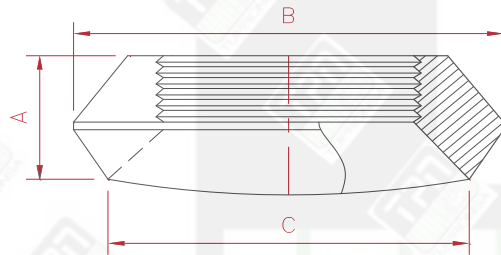
Socket 3000# & 6000#



DIAM. NOM OD	DIMENSIONES					PESO APROX EN KG.
	A	B	C	D	C	
MM	MM	MM	MM	MM	MM	
21.30	25.40	34.93	23.81	15.80	13.49	0.07
26.70	26.99	41.28	30.16	20.93	11.91	0.11
33.4	33.34	50.80	36.51	26.64	18.26	0.20
42.20	33.34	60.33	44.45	35.05	14.29	0.29
48.30	34.93	73.03	50.80	40.89	16.67	0.39
60.30	38.10	88.90	65.09	52.50	23.81	0.64
73.00	39.69	103.19	76.20	62.71	19.05	1.02
88.90	44.45	122.24	93.66	77.93	23.81	1.70
101.60	42.86	136.53	112.71	90.12	17.46	1.95
114.30	47.63	153.99	120.65	102.26	26.99	2.99
141.30	61.91	184.15	133.35	128.19	25.40	4.08
168.30	68.26	220.66	153.99	154.05	30.16	7.03

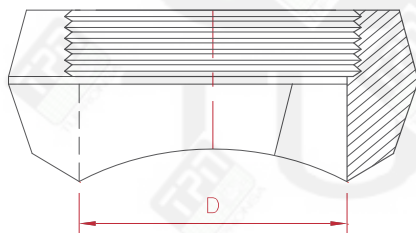
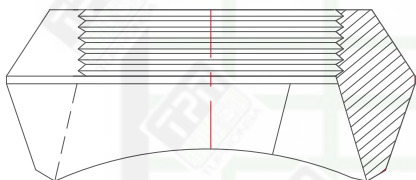
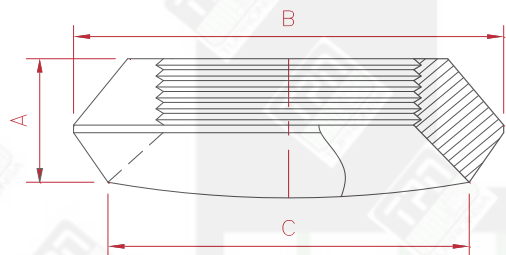
CL 3000

Thredolet 3000# & 6000# Reducido



DIAM. NOM OD	DIMENSIONES			PESO APROX EN KG.
	A	B	C	
MM	MM	MM	MM	
	19.05	25.40	15.88	0.05
	19.05	25.40	15.88	0.05
	20.64	31.75	19.05	0.09
	25.40	35.72	23.81	0.11
	26.99	43.66	29.37	0.16
	33.34	50.80	36.51	0.27
	33.34	65.09	44.45	0.41
CL 3000	48.30	72.23	50.80	0.45
	38.10	88.11	65.09	0.79
	46.04	103.19	76.20	1.36
	50.80	122.24	93.66	1.97
	53.98	132.56	101.60	2.61
	57.15	151.61	120.65	3.22
	66.68	185.74	141.29	5.44
	69.85	219.08	169.86	6.94
	28.58	34.13	14.29	0.14
	28.58	34.13	14.29	0.14
	31.75	43.66	19.05	0.20
	36.51	49.61	25.40	0.34
CL 6000	39.69	61.91	33.34	0.57
	41.28	69.06	38.10	0.73
	42.86	82.55	49.21	0.88
	52.39	102.39	69.85	2.27

Thredolet 3000# & 6000# educido

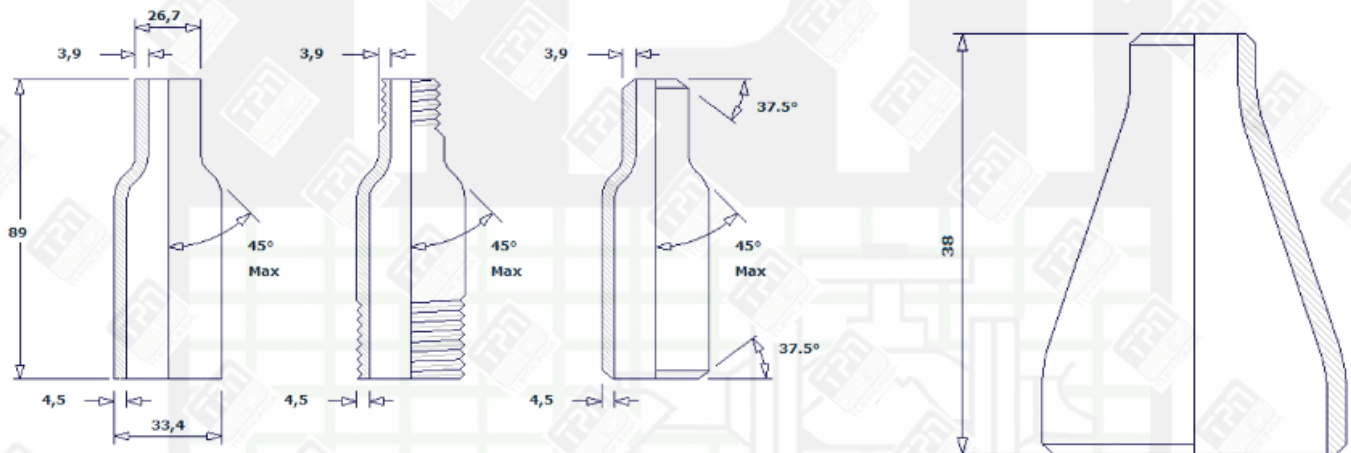


DIAM. NOM OD	DIMENSIONES				PESO APROX EN KG.
	A	B	C	D	
MM	MM	MM	MM	MM	
21.30	25.40	34.93	23.81	15.88	0.07
26.70	26.99	41.28	30.16	20.64	0.11
33.4	33.34	50.80	36.51	26.99	0.20
42.20	33.34	60.33	44.45	34.93	0.32
48.30	34.93	73.03	50.80	41.28	0.41
60.30	38.10	88.90	65.09	52.39	0.64
73.00	48.42	103.19	76.20	63.50	1.13
88.90	50.80	122.24	93.66	77.79	1.95
101.60	53.98	136.53	112.71	90.49	2.04
114.30	57.15	153.99	120.65	103.19	3.08
141.30	61.91	184.15	133.35	133.35	4.17
168.30	69.85	220.66	146.05	146.05	7.12

CL 3000



NIPLE SWAGE CONCENTRICO

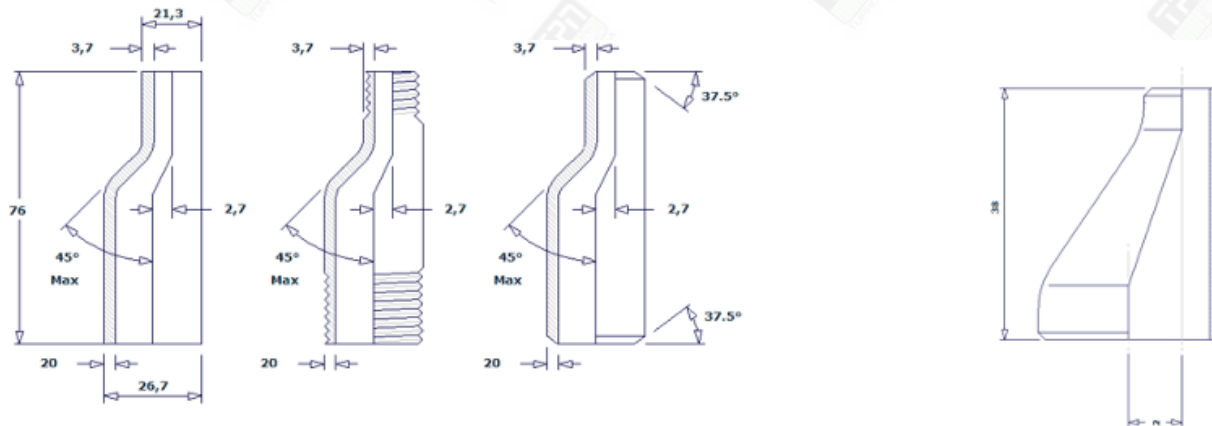


Extremos Planos

Extremos Roscados

Extremos Biselados

NIPLE SWAGE EXCENTRICO



Extremos Planos

Extremos Roscados

Extremos Biselados

NIPLES SWAGE CONCENTRICO 1/4" a 8"

MEDIDA EN PULGADAS			LARGO PULGADA	STD PESO	CEDULA XS	CEDULA160	CEDULA XXS
Medida	Esp. o O.D.	REDUCIDO A					
1/4"	0.540	1/8	2 1/4		1/4	1/4	1/4
3/8"	0.675	1/8 y 1/4	2 1/2		1/4	1/4	3/8
1/2"	0.840	1/8	2 3/4		1/3	1/2	1/2
		1/4 y 3/8	2 3/4		1/3	1/2	1/2
3/4"	1.050	1/8	3		1/2	1/2	3/4
		1/4 y 3/8	3		1/2	1/2	3/4
		1/2	3		1/2	1/2	3/4
1	1.315	1/8	3 1/2		2/3	3/4	1
		1/4 y 3/8	3 1/2		2/3	3/4	1
		1/2 y 3/4	3 1/2		2/3	3/4	1
1 1/4"	1.660	1/4 y 3/8	4		1	1 1/4	1 1/2
		1/2 y 3/4	4		1	1 1/4	1 1/2
		1	4		1	1 1/4	1 1/2
1 1/2"	1.900	1/4 y 3/8	4 1/2		1 1/6	1 1/2	2
		1/2 y 3/4	4 1/2		1 1/6	1 1/2	2
		1	4 1/2		1 1/6	1 1/2	2
		1 1/4	4 1/2		1 1/6	1 1/2	2
2"	2 3/8	1/4 y 3/8	6 1/2		3	4	4 1/4
		1/2 y 3/4	6 1/2		3	4	4 1/4
		1	6 1/2	2	2 1/3	4	4 1/4
		1 1/4	6 1/2	2	2 1/3	4	4 1/4
		1 1/2	6 1/2	2	2 1/3	4	4 1/4
2 1/2"	2 7/8	1/2 y 3/4	7		3 1/2	5 1/2	8
		1	7	3	3 1/2	5 1/2	8
		1 1/4	7	3	3 1/2	5 1/2	8
		1 1/2	7	3	3 1/2	5 1/2	8
		2	7	3	3 1/2	5 1/2	8
3"	3 1/2	1/2 y 3/4	8		6	8	11
		1	8	4 1/2	6	8	11
		1 1/4	8	4 1/2	6	8	11
		1 1/2	8	4 1/2	6	8	11
		2 y 2 1/2	8	4 1/2	6	8	11
3 1/2"	4	1/2 a 1 1/2	8	5 1/2	7 1/2	10	13 1/2
		2 a 3	8	5 1/2	7 1/2	10	13 1/2
4"	4 1/2	1/2 y 3/4	9		10	15	18
		1	9	7 1/2	10	15	18
		1 1/4 y 1 1/2	9	7 1/2	10	15	18
		2	9	7 1/2	10	15	18
		2 1/2	9	7 1/2	10	15	18
		3 y 3 1/2	9	7 1/2	10	15	18
5"	5 9/16	1 a 1 1/2	11	11 1/2	17	26	33
		2 y 2 1/2	11	11 1/2	17	26	33
		3 y 3 1/2	11	11 1/2	17	26	33
		4	11	11 1/2	17	26	33
6"	6 5/8	1 a 1 1/2	12	17	25	33	46
		2 y 2 1/2	12	17	25	33	46
		3 y 3 1/2	12	17	25	33	46
		4	12	17	25	33	46
		5	12	17	25	33	46
8"	8 5/8	2 a 3	13	29	44	62	78
		4 y 5	13	29	44	62	78
		6	13	29	44	62	78

Extremos disponibles:

Extremos Planos
 Extremos Roscados
 Extremos Planos X Rosca

